

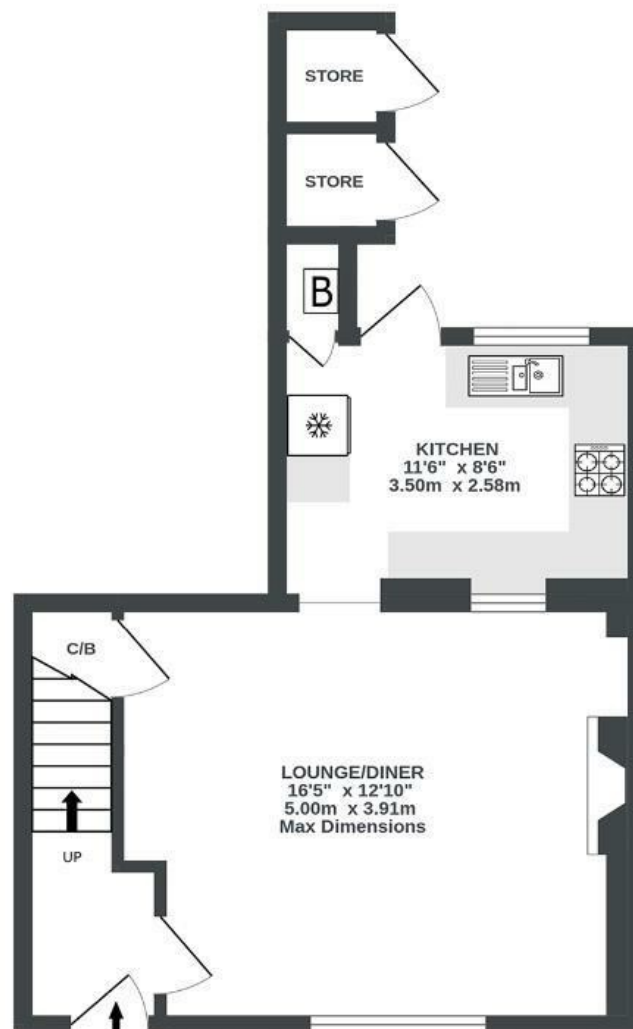
Old Park

KINGSDOWN

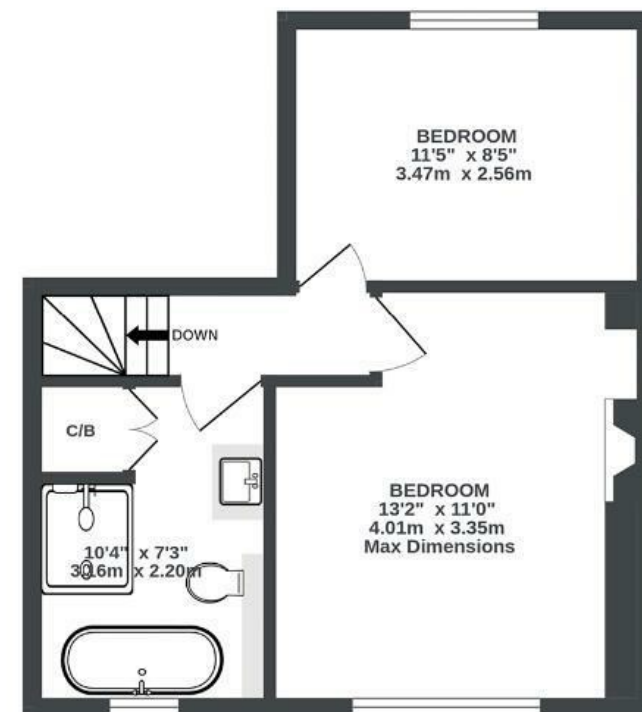
APPROXIMATE FLOOR AREA
65.3 SQM / 703 SQFT



GROUND FLOOR
366 sq.ft. (34.0 sq.m.) approx.



1ST FLOOR
337 sq.ft. (31.3 sq.m.) approx.



Illustrations are for reference purposes only, measurements are approximate, not to scale.

~~Boardwalk~~

Old Park , BRISTOL



£500,000



2 Bedrooms



BS2 8BD



1 Bathrooms

"The cottage has an amazing location in the heart of Bristol. It's incredibly quiet despite the central location. The cottage is really unique and has some lovely characteristics. It's super cosy in the winter, and the garden is an awesome place to relax in the summer."

